



ESSENTIAL HOME
MID CENTURY FURNITURE

**MID – CENTURY
MODERN
DESIGN
CRAFTSMANSHIP
VERSATILITY**



**Combining The Worlds
Of Craftsmanship And Design
Technology To Keep On Innovating
And Produce Nothing But The
Highest Quality Furniture.**

CONTENT

04 ESSENTIAL HOME

06 BEST SELLERS

10 UPHOLSTERY
CHAIRS P. 12 / BAR CHAIRS P. 38 / ARMCHAIRS P. 52 / SOFAS P. 72
MODULAR SOFAS P. 94 / SINGLE SOFAS P. 116 / STOOLS P. 120 / BEDS P. 124

126 CASEGOODS
SIDEBOARDS P. 128 / CABINETS P. 140 / CONSOLES P. 143
DINING TABLES P. 144 / CENTER TABLES P. 156 / SIDE TABLES P. 170
COFFEE TABLES P. 179 / BAR TABLES P. 182 / NIGHTSTANDS P. 183

184 ACESSORIES
MIRRORS P. 186 / DRESSING TABLES P. 189 / SCREENS P. 190
BOOKCASES P. 191 / DESKS P. 192 / BARS P. 193

194 RUGS

196 LIGHTING

198 PROJECTS

WE ARE ESSENTIAL

Essential Home is an innovative mid-century modern furniture brand that takes important historical and cinematographic references from the 1930s to 1960s and turns them into unique furnishing pieces.

WE ARE MID-CENTURY

Essential Home gathers inspiration not only from the glamorous Hollywood life of the 1940s, but also from the everyday life that defined that generation. Simple details such as the sleek lines of a 1960's chair or the retro ads that defined the era can be pinpointed in iconic pieces, such as Monocles sideboard.

WE ARE ON A MISSION

Essential Home's goal is to create the ultimate time traveling experience inside a single space. We want to create the perfect blend between the past and the present by creating mid-century modern furniture pieces that include a contemporary twist.

WE ARE VERSATILITY

The unique design of each of our pieces allows you to let your imagination run free and be creative with your projects: Essential Home is able to create the finest solutions for intimate and cozy ambiances that express elegance and luxury.

ISADORA DINING CHAIR



DIAMOND BIG MIRROR



VIRGINIA ARMCHAIR



FLORENCE STOOL



ELLEN ARMCHAIR



MONOCLES SIDEBOARD

**BEST
SELLERS**

COLLINS DINING CHAIR



KELLY BAR CHAIR



PHILIP CENTER TABLE

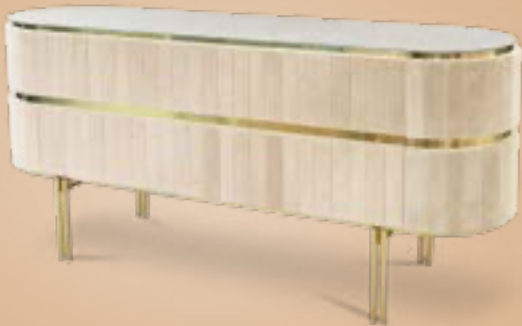
SOPHIA BED



ELLEN DINING CHAIR



EDITH SIDEBOARD



COLLINS BAR CHAIR



BERTOIA ROUND DINING TABLE



RUSSEL ARMCHAIR



HUDSON ARMCHAIR



JONES DINING CHAIR



KAHN SIDEBOARD



EZRA DINING TABLE





UPHOLSTERY

THE RIGHT FABRIC
CAN CHANGE THE WAY
WE PERCEIVE INTERIOR DESIGN.

Designed with a classic retro chic feel, Collins Dining Chair is perfect to pair with a circular dining table. With a perfectly curved back, supported by tapered glossy black legs with rich accents of polished brass, it's both stylish and comfortable!

STANDARD FINISHES

Feet: Polished Brass and Glossy Black

Cover: Siege 339

DIMENSIONS

Length: 58 cm | 22,83 in

Width: 61 cm | 24,02 in

Height: 85 cm | 33,46 in





A FUN CASA TO GO | CUE DESIGNS

An extremely sculptured dining chair full of luxurious features that will bring personality and uniqueness to your dining room. It is upholstered in velvet and has mixed tones both on the back and the round cushioned pad, perfectly contrasting with the slim legs made of polished brass.

STANDARD FINISHES

Feet: Polished Brass

Cover: Back - Siege 0083
and Seat - Portofino Trevira 1

DIMENSIONS

Length: 56,8 cm | 22,36 in

Width: 62 cm | 24,41 in

Height: 80 cm | 31,49 in



An artistic furniture piece to match your luxury project, Isadora is the piece that you need for your interior design. The upholstered dining chair is characterized by a symmetrical design embellished with brass details. The geometrical shape is a statement bringing easily an exquisite touch to your home or hospitality project.

STANDARD FINISHES

Structure: Aged Brass;
Essential Home textile

DIMENSIONS

Length: 60 cm | 23,62 in
Width: 56 cm | 22,05 in
Height: 80 cm | 31,50 in



TIMELESS MODERN HOUSE | PARTNERSHIP KARIM RASHID

20

GABLE DINING CHAIR

Designed with a classic retro chic feel, comfortable and perfect to pair with a circular dining table. Finely upholstered in leather, welted stitches on the seat and a stylist degree reclining on the crescent open back.

STANDARD FINISHES

Feet: Polished Brass
Essential Home textile

DIMENSIONS

Length: 60 cm | 23,62 in
Width: 55 cm | 21,65 in
Height: 85 cm | 33,46 in



Garbo features a velvet upholstered seat with a removable cushion and a crescent low back handmade in brass, finished in plated copper. It's supported by four solid walnut wood legs that sit atop copper plated feet, making it a timeless modern dining chair.

STANDARD FINISHES

Body: Plated Copper, Essential Home textile

Legs: Walnut wood legs, copper plated feet

DIMENSIONS

Length: 63,5 cm | 25 in

Width: 54 cm | 21,26 in

Height: 80,3 cm | 31,61 in



Designed to perform in a manner that indulges the eye, Jones' a colorful and classy upholstered dining chair that can easily fit any style you wish. It also features a curved polished brass base, mixing mid-century and contemporary elements.

STANDARD FINISHES

Body: Polished Brass
Essential Home textile

DIMENSIONS

Length: 60 cm | 23,62 in
Width: 50,2 cm | 19,76 in
Height: 80,2 cm | 31,57 in



Part of Marco collection, this mid-century piece is the ultimate chair for a luxurious dining room. Handmade by portuguese artisans, Marco dining chair features polished brass and glossy black feet along with round shaped arms to provide even more comfort.

STANDARD FINISHES

Feet: Polished Brass and Glossy Black
Essential Home textile

DIMENSIONS

Length: 83,5 cm | 32,87 in
Width: 69,5 cm | 27,36 in
Height: 82,2 cm | 32,36 in



A tub chair with curvilinear forms that is truly irresistible in all its might. Its sleek look can be compared to the space age aesthetics and it's usually designed with bright colors and basic white.

STANDARD FINISHES

Feet: Polished Brass
Essential Home textile

DIMENSIONS

Length: 61 cm | 24,02 in
Width: 53 cm | 20,86 in
Height: 70 cm | 27,56 in



Henry is a three-legged upholstered chair, handmade in solid wood and with soft, velvet upholstery. Although it only features three legs, unlike most chair designs, provides the best stability and safeness to your interior design. Its round circular structure is the perfect way to add a modern twist to your interior room project.

STANDARD FINISHES

Structure: Solid Wood Walnut;

Cover: Essential Home textile

DIMENSIONS

Length: 44 cm | 17,32 in

Width: 49 cm | 19,29 in

Height: 81 cm | 31,89 in



Inspired by the most famous occasional designs, a mid-century masterpiece and an homage to the modern living era. A durable and solid chair features a body structure produced in solid walnut wood.

STANDARD FINISHES

Body: Varnished Walnut

Feet: Polished Brass

Cover: Essential Home textile

DIMENSIONS

Length: 67 cm | 26,38 in

Width: 52,5 cm | 20,67 in

Height: 73,5 cm | 28,94 in



Designed with a classic retro chic feel, Russel is comfortable and perfect to pair with a circular dining table. Finely upholstered in the best fabric, this is what mid-century design is all about!

STANDARD FINISHES

Feet: Polished Brass

Cover: Essential Home textile

DIMENSIONS

Length: 62 cm | 24,41 in

Width: 65 cm | 25,59 in

Height: 76,8 cm | 30,24 in



Inspired by the six times Oscar nominee Deborah Kerr, this unique dining chair by Masquespacio embraces the leading role of this fun and modern product selection due to its innovative shapes and multiple customization options.

STANDARD FINISHES

Essential Home textile and polished brass

DIMENSIONS

Length: 60 cm | 23,62 in

Width: 57 cm | 22,44 in

Height: 78 cm | 30,71 in



The Roxy provided a platform for bands such as The Clash, The Police, and Siouxsie and the Banshees that made the history of music. Those eclectic vibes inspired the creative process behind the Roxy dining chair, a sleek furniture piece that can suit any project style.

STANDARD FINISHES

Structure: Brushed Brass;
Essential Home Textile

DIMENSIONS

Length: 68.4 cm | 26.9 in
Width: 57.1 cm | 22.4 in
Height: 76 cm | 29.9 in



These unique fifties patterns are found in the luxurious upholstery of the Federico chair design, paired with the ivory back seats. This beautiful piece is a tribute to the great Federico Fellini, one of the best Italian film directors and screenwriters, known for his distinctive style, a mix of fantasy and baroque images with dreadfulness.

STANDARD FINISHES

Structure: Solid Wood Walnut;
Cover: Essential Home textile

DIMENSIONS

Length: 64 cm | 25,19 in
Width: 59 cm | 23,22 in
Height: 83,5 cm | 32,87 in



36

MARIE CHAIR

An occasional chair that incorporates all of the mid-century modern elements into a contemporary vision. Features slim legs made of polished brass, a round pad upholstered with a seductive velvet and a round back.

STANDARD FINISHES

Feet: Polished Brass

Body: Essential Home textile

DIMENSIONS

Length: 54,8 cm | 21,57 in

Width: 61,5 cm | 24,21 in

Height: 85,5 cm | 33,66 in



With incredible glamour and style, impossible to find anywhere else, Collins has a crescent open back and it's designed with sleek mid-century modern lines. With glamorous glossy black legs, accented by polished brass details, it was designed to stand out!

STANDARD FINISHES

Feet: Polished Brass and Glossy Black

Cover: Essential Home textile

DIMENSIONS

Length: 53 cm | 20,86 in

Width: 53 cm | 20,86 in

Height: 105 cm | 41,33 in



HOUSE IN SAINT TROPEZ | PARTNERSHIP CARLO DONATI

Considered as one of the most iconic film directors in the Hollywood industry, Thomas Leo McCarey was the inspiration for this unique piece. Featuring a fun and creative sense of style, like Thomas, the unique bar chair piece is upholstered in a smooth velvet fabric that is combined with some bright brass details in its structure.

STANDARD FINISHES

Essential Home textile and polished brass

DIMENSIONS

Length: 40 cm | 15,75 in

Width: 48 cm | 18,90 in

Height: 109 cm | 42,91 in



Feel like you're sitting on cotton candy or a cloud with this perfect mid-century bar chair. It features a shiny round base and a footrest in polished brass, is fully upholstered in cotton velvet and has a super stylish design, with an accent low back and a cylindrical shape.

STANDARD FINISHES

Feet: Polished Brass

Essential Home textile

DIMENSIONS

Length: 55,3 cm | 21,77 in

Width: 63,6 cm | 25,04 in

Height: 100 cm | 39,37 in



42

KELLY BAR CHAIR

A timeless and unforgettable piece, inspired by the classic movie Casablanca, it's stylish, comfortable and stands the test of time. The body is a full piece of polished brass and features a low back, a foot rail and brown leather on the seat.

STANDARD FINISHES

Body: Polished Brass
Essential Home textile

DIMENSIONS

Length: 36,9 cm | 14,53 in
Width: 45 cm | 17,72 in
Height: 113 cm | 44,49 in



**DIMENSIONS**

Length: 40 cm | 15,7 in

Width: 44 cm | 17,3 in

Height: 83 cm | 32,7 in



46

MANSFIELD BAR CHAIR

Mid-century design with a contemporary twist in a bar chair perfect for any home. An accent bar chair with a round shape body supported by a polished brass base and a footrest for comfort. Mansfield is upholstered in a sophisticated velvet and a stylish design.

STANDARD FINISHES

Feet: Polished Brass
Essential Home textile

DIMENSIONS

Length: 67,4 cm | 26,53 in
Width: 89 cm | 35,04 in
Height: 82 cm | 32,30 in



Upholstered in a creamy leather and a compact design with two rolled arms, Loren is a posh accent bar chair with sinuous curves on its back supported by a round polished brass base and a footrest for comfort.

STANDARD FINISHES

Feet: Polished Brass
Essential Home textile

DIMENSIONS

Length: 60 cm | 23,62 in
Width: 49 cm | 19,29 in
Height: 102 cm | 40,16 in



47

LOREN BAR CHAIR

48

ISADORA BAR CHAIR

The Isadora bar chair is an artistic furniture design that is upholstered with the finest velvet textile and features a minimalist brass base to complement the look.

STANDARD FINISHES

Structure: Brushed Brass;
Cover: Essential Home Textile

DIMENSIONS

Length: 46 cm | 18,1 in
Width: 56 cm | 22 in
Height: 102 cm | 40,2 in



Adorn your living room with a sophisticated design piece that incorporates all of the mid-century elements. The base is round and swivels up to 360 degrees, providing comfort through the foot rail.

STANDARD FINISHES

Feet: Polished Brass
Essential Home textile

DIMENSIONS

Length: 63 cm | 24,80 in
Width: 61 cm | 24,02 in
Height: 109 cm | 42,91 in



GREYBROOK PENTHOUSE | FENTON WHELOH

Probably one of our most classic design pieces, Hudson never disappoints with its typical mid-century design and strong lines. The body structure is produced in solid walnut wood with metal shoes on its legs, made of polished brass.

STANDARD FINISHES

Body: Solid Walnut Wood

Feet: Polished Brass

Essential Home textile

DIMENSIONS

Length: 72,6 cm | 28,58 in

Width: 80,5 cm | 31,69 in

Height: 89,3 cm | 35,16 in





As versatile as it is stylish, Bogarde is finished in leather, and the swivel polished brass base conveys an idea of style and playfulness.

Despite having all the mid-century elements, this is a modern armchair that it's easily customizable to fit exactly what you need.

STANDARD FINISHES

Feet: Polished Brass and Glossy Black

Essential Home textile

DIMENSIONS

Length: 75 cm | 27,52 in

Width: 79 cm | 31,1 in

Height: 73 cm | 28,74 in



Ellen is a sophisticated armchair, with a contemporary twist we love so much. Built on top of a polished brass base, and upholstered with a smooth velvet fabric, its curvilinear open back makes it the perfect seat for those nostalgic retro lovers that can't miss out on the vintage details.

STANDARD FINISHES

Feet: Polished Brass

Essential Home textile

DIMENSIONS

Length: 80 cm | 31,49 in

Width: 75,5 cm | 29,72 in

Height: 73,5 cm | 28,93 in



Inspired by the mid-century retro designs, Loren features a simple and sophisticated design. Loren armchair has a swivel golden brass base and it is upholstered in leather. The compact and curved look, along with its rolled arms make this a luxury statement piece.

STANDARD FINISHES

Feet: Polished Brass

Essential Home textile

DIMENSIONS

Length: 86 cm | 33,85 in

Width: 69 cm | 27,16 in

Height: 75 cm | 29,53 in



The iconic Mansfield chair is our ultimate mid-century modern masterpiece you'll want to have in your home. Combining the velvet touch with the 60's sleek lines, it is an accent barrel chair atop a sophisticated swivel polished brass base.

STANDARD FINISHES

Feet: Polished Brass

Body: Portofino 17

DIMENSIONS

Length: 100 cm | 39,37 in

Width: 89 cm | 35,03 in

Height: 77,3 cm | 30,43 in



Softly padded with a soft velvet, the Virginia armchair design features a gently laid-back structure on a molded shell, to provide style and comfort. The golden polish brass base of the modern armchair adds an extra touch of luxury to the design. This is a bespoke accent piece can easily be the star of your reading corner, bedroom area or even modern living space.

STANDARD FINISHES

Structure: Solid Wood Walnut and Aged Brass;

Cover: Essential Home textile

DIMENSIONS

Length: 85 cm | 33,46 in

Width: 90 cm | 35,43 in

Height: 90 cm | 35,43 in



An armchair that stays true to the mid-century modern style, Marco armchair brings an uncommon round shape with curvy and comfortable arms. With a very natural and sleek look, as comfortable as it can get.



STANDARD FINISHES

Feet: Polished Brass and Glossy Black

Essential Home textile

DIMENSIONS

Length: 108 cm | 42,52 in

Width: 97 cm | 38,18 in

Height: 78,7 cm | 30,98 in



An enchanting piece fit for glamorous interiors with a velvet touch that make it even more luxurious than its design entails. This crescent accent chair is an elegant and retro chic piece of furniture inspired by the 60's design legacy.

STANDARD FINISHES

Feet: Polished Brass
Essential Home textile

DIMENSIONS

Length: 83,5 cm | 32,7 in
Width: 73,5 cm | 20,67 in
Height: 77 cm | 30,31 in



CH TEA ROOM KOBE

Russel is an accent chair both stylish for a living room or a lounge bar chair, with futuristic lines that makes this an irresistible piece. The base is round, produced in golden brass and can swivel 360 degrees, providing not only function and comfort but also mid-century style elements.

STANDARD FINISHES

Feet: Polished Brass
Essential Home textile

DIMENSIONS

Length: 85,7 cm | 33,74 in
Width: 74 cm | 29,13 in
Height: 71,4 cm | 28,11 in



Displaying a classic elegant design, it is designed with comfort and discreet sophistication in mind. It features a solid wood body cushioned with the finest tufted leather upholstery and a final touch of polished brass over the sides for added luxury.

STANDARD FINISHES

Polished Brass and Varnished Walnut.

DIMENSIONS

Length: 92 cm | 36,22 in
Width: 87 cm | 34,25 in
Height: 88 cm | 34,65 in



This armchair is as versatile as it is customizable, making it possible to choose its soft fabric and color so it will match any design project you use it on. It will be impossible to deny having this stunning mid-century piece in your living room.

STANDARD FINISHES

Polished Brass and Walnut Wood.

DIMENSIONS

Length: 76 cm | 29,92 in

Width: 91 cm | 35,83 in

Height: 81 cm | 31,89 in



The reinterpretation of the classic cockpit armchair with soft and enveloping shapes. Its backrest keeps the same rounded outline for extra comfort and the body is fully upholstered in Alpaca wool for a soothing touch. To enhance the design, it also features a bespoke brushed brass base that turns this modern organic furniture piece into the perfect fit with any space.

STANDARD FINISHES

Structure: Brushed Brass;

Cover: Essential Home Textile

DIMENSIONS

Length: 95 cm | 37,4 in

Width: 85 cm | 33,4 in

Height: 70 cm | 27,5 in





Zelda is the first daybed to enter Essential Home's furniture collection. A daybed is such a dynamic and versatile piece of furniture that will work in many areas of your home. This piece can have multiple purposes for your project. Zelda's asymmetrical feature enhances its sculptural identity, while the bigger seat makes it even more cozy and comfortable.

STANDARD FINISHES

Cover: Essential Home Textile

DIMENSIONS

Length: 160 cm | 62,9 in

Width: 80 cm | 31,4 in

Height: 70 cm | 27,5 in



Sherman is an homage to the mid-century sofas, a touch of modernity, style and the same high-quality materials and craftsmanship. Comfort is behind the entire design of Sherman but sophistication is the keyword when taking one look at this mid-century piece.



STANDARD FINISHES

Feet: Polished Brass
Essential Home textile

DIMENSIONS

Length: 313 cm | 123,23 in
Width: 166 cm | 65,35 in
Height: 89,5 cm | 35,23 in



LUXURIOUS FOREST HOUSE IN ITALY | ASHLEY GADEOVA

78

KLAUDE SOFA

Klaude Sofa is a design that is not labored with embellishment but has a greater human and sensual connection with us. The elegant, sloping sides are quite inviting, beckoning one to sit down. Upholstered with the best high-quality fabrics, this modern piece is extremely comfortable and functional to any design.

STANDARD FINISHES

Leather, Woollen Velvet,
Essential Home textile

DIMENSIONS

Lenght: 355 cm | 139,7 in
Width: 94 cm | 37 in
Height: 90 cm | 35,4in



Karim Rashid always imagined Kay sofa being populated with soft, elegant forms. With this design, Karim Rashid wanted to create a place where everyone can relax, ideate, connect and dream. This uniquely designed sofa was handcrafted with the best high-quality materials, making it both comfortable, and timeless for any interior.

STANDARD FINISHES

Structure: Brushed Brass;
Essential Home textile

DIMENSIONS

Lenght: 166.5 cm | 65.5 in
Width: 305 cm | 120 in
Height: 77 cm | 30.3 in



79

KAY SOFA



This sofa brings you the elegance of mid-century with the sophistication of modern techniques and stunning materials. Made for the most luxurious of living rooms, Marco never disappoints with stunning polished brass and glossy black feet and incredible upholstery that is easily customizable.



STANDARD FINISHES

Feet: Polished Brass and Glossy Black

Essential Home textile

DIMENSIONS

Length: 247 cm | 97,24 in

Width: 96,5 cm | 37,99 in

Height: 82 cm | 32,28 in



84

NOVAK SOFA

A sofa that combines some details from mid-century style with a contemporary design vision. The base is rectangular, but it has a contrasting low back with rounded shapes. Upholstered with a sophisticated velvet and finished with piping detail, it's a desirable mid-century modern piece.

STANDARD FINISHES

Feet: Polished Brass
Essential Home textile

DIMENSIONS

Length: 340 cm | 133,86 in
Width: 99 cm | 38,98 in
Height: 87 cm | 34,25 in



86

GABLE SOFA

Gable is an extremely comfortable mid-century modern sofa with a contemporary finish that allows decor melange. The seat cushions have a dual track stitch, complementary to the seam accents on its curvy and sculptural back.

STANDARD FINISHES

Feet: Polished Brass

Essential Home textile

DIMENSIONS

Length: 160 cm | 62,99 in

Width: 70 cm | 27,56 in

Height: 83,1 cm | 32,72 in



This futuristic sofa is designed with edgy lines and has a stylistic open back and sloping armrests that merge with the luxurious velvet upholstery. This unique design is then supported by a polished brass base that give it even more of a mid-century modern look.

STANDARD FINISHES

Feet: Polished Brass

Essential Home textile

DIMENSIONS

Length: 160 cm | 62,99 in

Width: 73 cm | 28,74 in

Height: 74 cm | 29,13 in



87

RUSSEL SOFA

Karim has always been interested in showing the world how a contemporary world can be warm, human, and pleasurable. He highly believes this philosophy translates well in the Karlotta sofa. Vibrant contemporary vibe, while the golden base adds some luxury. The pebble forms provide some humor to the design, making this unique three-seater sofa a statement piece.

STANDARD FINISHES

Essential Home textile

DIMENSIONS

Length: 279,3 cm | 109,9 in

Width: 100 cm | 39,3 in

Height: 84,5 cm | 33,2 in



Inspired by the 50's and 60's retro designs, Loren sofa combines the best of the modern flair with the contemporary lifestyle. Supported by an oval polished brass base, it is fully upholstered in leather and has two distinctive rolled arms, that can be used both as back and armrest.

STANDARD FINISHES

Feet: Polished Brass
Essential Home textile

DIMENSIONS

Length: 140 cm | 55,12 in
Width: 70 cm | 27,56 in
Height: 73 cm | 28,74 in



Mansfield is an accent sleek sofa with an undeniable modern elegance. Its rounded forms are a striking addition to any living room, along with the velvet upholstery and the polished brass on the base. The details of the fabric and the design itself are what makes people fall in love with this sofa.

STANDARD FINISHES

Feet: Polished Brass
Essential Home textile

DIMENSIONS

Length: 164 cm | 64,56 in
Width: 92,5 cm | 36,42 in
Height: 77,8 cm | 30,63



With Kandi, Karim Rashid wanted to create something of pure geometry and refined detail. This piece is the epitome of his Kasual ethos, but still retains the precision of form and spirit. These soft modules can be put together to form a sofa with a distinctive design. Customizable in color and shape, this is definitely one of the best pieces to play around with.

STANDARD FINISHES

Structure: Brushed Brass;
Essential Home textile

DIMENSIONS

Length: 315 cm | 124 in
Width: 142 cm | 55,9 in
Height: 57 cm | 22,4 in



110

SOPHIA MODULAR SOFA

A particular bench seat sofa that draws inspiration from the aesthetics of mid-century modern design with a base made of gold-plated brass, the button tufted sides and upholstered in velvet. Providing much more than just style and comfort it's perfect for a lounge area.

STANDARD FINISHES

Feet: Polished Brass
Essential Home textile

DIMENSIONS

Length: 68,4 cm | 26,93 in
Width: 91,2 cm | 35,91 in
Height: 83,5 cm | 32,87 in

**STANDARD FINISHES**

Feet: Polished Brass
Essential Home textile

DIMENSIONS

Length: 108 cm | 42,52 in
Width: 105 cm | 41,34 in
Height: 84 cm | 33,07 in

111



112

ZELDA SOFA

This Zelda sofa by Studiopepe is a three-seater piece upholstered in premium materials produced to last a lifetime. Also available in a bigger size, the bespoke Zelda sofa features a generously rounded outline through its entire structure and an oversize backrest with a signature central fold surrounding a soft and organic seat.

STANDARD FINISHES

Essential Home textile

DIMENSIONS

Length: 190 cm | 74,8 in

Width: 92 cm | 36,2 in

Height: 70 cm | 27,5 in





Zelda single sofa truly challenges and redefines the limits of the new modern design trends. Featuring a generous rounded outline through its entire structure, it has a loop oversize backrest with a signature central fold surrounding a soft, organic seat. Zelda is an exquisite modern furniture piece that provides the best of comfort, functionality, and design to any project.


STANDARD FINISHES

Essential Home textile

DIMENSIONS

Length: 95 cm | 37,40 in

Width: 85 cm | 33,46 in

Height: 70 cm | 27,56 in



This stunning round-shaped single sofa is the perfect seating arrangement for any design project, giving a contemporary vibe with a touch of Memphis style. Available in several vibrant colors and with a futuristic design, this curvy armchair is designed to hold itself with a golden brass structure that gives a luxurious touch to it, without letting go of the modern and artistic vein behind its design.

**STANDARD FINISHES**

Structure: Polished Brass;
Essential Home textile

DIMENSIONS

Length: 111 cm | 43,3 in
Width: 100 cm | 39,3 in
Height: 84,5 cm | 33,2 in



A low stool both fun and practical, and a soft and comfortable solution for your living room. It boosts some gold details over its trendy pastel colors available in the customization.

STANDARD FINISHES

Feet: Polished Brass
Essential Home textile

DIMENSIONS

Diam: 58,8 cm | 23,15 in
Height: 48 cm | 18,9 in



122

MINELLI STOOL

A curvy and colorful stool that is practical and comfortable. It is a body of solid wood upholstered in classy velvet and wood exposed on the sides. This tiny cube with rounded edges is very comfortable and is an easy way of adding a little splash of color to your ambience.

STANDARD FINISHES

Polished Brass and Walnut Wood.

Essential Home textile

DIMENSIONS

Length: 45 cm | 7,72 in

Width: 40 cm | 15,75 in

Height: 44 cm | 17,32 in



Comfortably elongated, a perfect bench for any interior ambience. This curvy bench is upholstered in the finest bonded cloth or velvet, leaving the sides with exposed wood, showing its true nature as a mid-century modern piece. It is very comfortable and an easy way to add more seating and decor to your room at the same time.

STANDARD FINISHES

Polished Brass and Walnut Wood.

Essential Home decor

DIMENSIONS

Length: 120 cm | 47,24 in

Width: 40 cm | 15,75 in

Height: 44 cm | 17,32 in



123

MINELLI BENCH

124

SOPHIA BED

Sophia is a mid-century styled panel bed, with bonded velvet on the headboard and footboard, perfect for any bedroom. Expertly stitched and accented with tufted brass buttons on both sides, proving the high-quality of this stunning piece.

STANDARD FINISHES

Feet: Polished Brass
Essential Home textile

DIMENSIONS

Length: 240 cm | 94,49 in
Width: 172 cm | 67,8 in
Height: 113 cm | 44,49 in



A bed that is perfect for a bedroom sober and sophisticated. This bed's body, which displays beautifully organic lines, is built out of walnut wood and is then expertly covered by bonded velvet. Only the sides are left with exposed wood, showing this bed's true sobriety. No doubt a truly inspiring design for retro lovers who crave for lavish yet clear-headed design..

STANDARD FINISHES

Polished Brass and Walnut Wood.
Essential Home textile

DIMENSIONS

Length: 203 cm | 79,92 in
Width: 232 cm | 91,3 in
Height (without mattress): 28 cm | 11 in

125

MINELLI BED





CASEGOODS

AN ESSENTIAL PART OF A ROOM,
CASEGOODS SET THE MOOD
FOR THE ENTIRE DECOR.

128

ANTHONY SIDEBOARD

Retro met contemporary and created a mid-century modern sideboard, stylish in any house design. Produced in solid walnut wood, topped by a white polished marble and supported by brass square feet, it brings a playful geometric pattern on its doors, accented by the brass trim all over the body.

STANDARD FINISHES

Body: Solid Walnut Wood

Top: Estremoz Marble

Feet & Front: Polished Brass

DIMENSIONS

Length: 220 cm | 86,61 in

Depth: 50 cm | 19,69 in

Height: 77,6 cm | 30,55 in

Sleek and stylish, Dandy truly embodies the best from Scandinavian design roots. Its body is entirely made of solid walnut wood and it resembles a kitsch radio because of its shape and the use of grill cloth on the doors.

STANDARD FINISHES

Gold Plated Brass, Varnished

Walnut and Straw

DIMENSIONS

Length: 200 cm | 78,7 in

Width: 50,5 cm | 19,88 in

Height: 80,5 cm | 31,69 in

129

DANDY SIDEBOARD



The Duncan sideboard reinvents the 60s charm in a unique way. The curved lateral metal structures support and hug the body of the side doors, while the main storage space is enhanced with a geometric wooden pattern that adds another layer of texture. High-quality materials and exquisite craftsmanship make this an exceptional statement piece for any modern home design.



STANDARD FINISHES

Structure outside: Rose mirror on top;
Solid Wood Walnut and Aged Brass;
Structure inside: Aged Brass

DIMENSIONS

Length: 182 cm | 71,65 in
Width: 51 cm | 20,08 in
Height: 81 cm | 31,89 in





A distinctive piece to furnish your living room and add the perfect twist to your interior! It is upholstered with a soft velvet, and stands out for its high-end look at the top. Features a curvilinear body with sleek and simple legs made of brass, that contrasts with strong accents of gold.

STANDARD FINISHES

Feet: Polished Brass

Body: Polished Brass, Estremoz Marble and Essential Home textile

DIMENSIONS

Length: 180 cm | 70,86 in

Width: 50 cm | 19,68 in

Height: 85 cm | 33,46 in



These same curvilinear lines are found in the sophisticated design of the Vittorio sideboard, named after the great Vittorio Gassman. The combination of the wooden black lacquered H shaped legs with a walnut wood body and recessed golden handles, recall the lines of a blooming flower.

STANDARD FINISHES

Gold Plated Brass, Matte Black and Varnished Walnut

DIMENSIONS

Length: 42,5 cm | 16,72 in

Width: 217 cm | 85,43 in

Height: 90 cm | 35,43 in



Inspired by the monolithic style of Louis Kahn, this is a sideboard that will bring a strong presence to your living room. Produced with black poplar, and brass trims that are laid out symmetrically. The wooden interior is glazed with a soft caramel tone producing a gorgeous effect.

STANDARD FINISHES

Black Glass, Walnut & Polished Brass

DIMENSIONS

Length: 220 cm | 86,6 in

Width: 58 cm | 22,8 in

Height: 81 cm | 32 in



A perfect furniture piece for retro lovers and mid-century admirers. Built entirely out of solid walnut wood, accented by its gold plated brass front doors that feature a protruding circular design.

STANDARD FINISHES

Gold Plated Brass, Matte Black and Varnished Walnut

DIMENSIONS

Length: 162 cm | 63,77 in

Width: 48,6 cm | 19,12 in

Height: 79,8 cm | 31,41 in





140

MONOCLES CABINET

A drinks cabinet with a fresh and sleek look, comprising style and functionality. Produced in classic materials such as solid walnut wood, and with front brass paneling. It is split in two sections: one with a set of shelves and drawers, and the other a stylish storage space for cocktails.

STANDARD FINISHES

Gold Plated Brass, Matte Black and Varnished Walnut

DIMENSIONS

Length: 168 cm | 66,14 in
Width: 49,5 cm | 19,48 in
Height: 173 cm | 68,1 in



141



STANDARD FINISHES

Gold Plated Brass, Matte Black and Varnished Walnut
Feet: Brushed Gold

DIMENSIONS

Length: 57,4 cm | 22,59 in
Width: 49,5 cm | 19,48 in
Height: 174 cm | 68,5 in



142

HEPBURN CABINET

Hepburn cabinet is a timeless piece which can be used as a drinks cabinet, sitting well in a modern home bar, or a private country club salon. With a body handmade in walnut and two door handles made of polished brass, this mid-century modern cabinet stands out thanks o its leather upholstered applique at the bottom.

STANDARD FINISHES

Body: Walnut wood, EH beige Leather

Polished brass

DIMENSIONS

Length: 140 cm | 56,3 in

Width: 52 cm | 20,47 in

Height: 150 cm | 59 in



A gallery shelf fit for any design.
A narrow console table with chic polished brass legs and structure with a top made of verde guatemala marble.
A gallery shelf for additional storage space in your living room or entryway.

STANDARD FINISHES

Polished Brass and Polished

Guatemala Marble

DIMENSIONS

Length: 122 cm | 48,03 in

Width: 34 cm | 13,3 in

Height: 85 cm | 33,46 in



143

CRAIG CONSOLE

The Ezra Dining Table might be one of the most unique pieces in Studiopepe's collection for Essential Home. Inspired by the beautiful Italian architecture scenario, the modern dining table was drawn from a combination of straight curvilinear lines redefining the limits of physics. Ezra opens the world's design horizon with its solid wooden structure enlightened with some polished brass details, perfect to embellish any modern space.

STANDARD FINISHES

Structure: Solid Wood Walnut
and Aged Brass

DIMENSIONS

Length: 250 cm | 98,43 in

Width: 100 cm | 39,37 in

Height: 75 cm | 29,52 in



146

A modern dining table perfect for smaller spaces, with a round shape that is not only trendy but extremely enticing. Designed purely of dark marble, this is a majestic dining table with incredible potential to bring out the best in your dining room décor.

STANDARD FINISHES

Gold Plated Brass, Polished Nero

Marquina Marble

DIMENSIONS

Diam.: 150 cm | 59,05 in

Height: 75 cm | 29,53 in



Designed in a curvy hourglass shape, it is finished in nero marquina marble, contrasted by the white portuguese estremoza marble. It is accentuated by a brass ring on the center and features a countertop of smoked glass.

STANDARD FINISHES

Gold Plated Brass, Polished Nero Marquina

Marble, Polished Estremoza Marble and

Black Smoked Glass

DIMENSIONS

Diam: 130 cm | 51,18 in

Height: 78,5 cm | 30,90 in



147

Bertoia is a piece with unmistakable trendy materials and a design that is sure to stun you. If the dark marble of this stunning dining table wasn't enough to make this the design fit for your home décor, the golden ring on the middle of the countertop gives it an even more refined touch.

STANDARD FINISHES

Gold Plated Brass, Polished Nero

Marquina Marble

DIMENSIONS

Length: 280 cm | 110,24 in

Width: 110 cm | 43,31 in

Height: 75 cm | 29,53 in



150

WORMLEY DINING TABLE

A perfect centerpiece for the engineering minds. A round dining table that features a skillful engineered structure made of pipe rings, a hallmark of excellence in metalwork that supports a clear glass on the top.

STANDARD FINISHES

Polished Brass and Clear Glass

DIMENSIONS

DIAM.: 168 cm | 66,14 in

Height: 81 cm | 31,89 in



A dramatic twist for a glamorous table. The triangular shaped base adds another dramatic twist to this glamorous table, contrasting with the round countertop made of smoked glass.

STANDARD FINISHES

Polished Brass and Clear Glass

DIMENSIONS

DIAM.: 130 cm | 51 in

Height: 78,5 cm | 30,91 in



151

WINCHESTER DINING TABLE

152

ALBERTO DINING TABLE

Named after one of the best Italian cinema personalities (Alberto Sordi), the smooth curvilinear lines of the wooden legs of this unique table design take inspiration from the architectural shapes of Oscar Niemeyer's concrete structures. They elegantly meet the round corners of the marble top, handcrafted in Calacatta Oro, creating a small modernist architecture detail in its clean structure.

STANDARD FINISHES

Solid Wood Walnut and Calacatta

Gold Marble

DIMENSIONS

Length: 210 cm | 82,67 in

Width: 100 cm | 39,37 in

Height: 75 cm | 29,52 in



Maxime, the name behind a little bistro in Paris opened in 1890s that became a legendary spot of Paris nightlife. Living the peak of its glory a century afterwards, in the 1980s, when it was owned by the visionary designer Pierre Cardin. Its structure is made in solid wood and brass, with a clean glass top which provides sophistication and vibrant at the same time.

STANDARD FINISHES

Structure: Brushed Brass; Solid Walnut

Wood; Lacquered Glass

DIMENSIONS

Diam: 180 cm | 70.8 in

Height: 73 cm | 28.7 in



The Cary dining table by Masquespacio is a unique masterpiece inspired by Cary Grant, known as one of the defining actors in the classic Hollywood era, Cary Grant. Like in the movie story of "An affair to remember" this unique furniture piece is the perfect match for the Kerr Dining chair designs, creating a strong visual impact in the ambiance thanks to the use of gold and terrazzo.

STANDARD FINISHES

Terrazzo and polished brass

DIMENSIONS

Diam.: 120 cm | 47,24 in

Height: 75 cm | 29,53 in



A perfect centerpiece with a strong presence that brings a modern approach to its design. It boasts a guatemala marble top, supported by a stainless steel structure in a brass finish with a low shelf for storage.

STANDARD FINISHES

Polished Brass and Polished
Guatemala Marble

DIMENSIONS

Length: 113 cm | 44,48 in
Width: 113 cm | 44,48 in
Height: 37,8 cm | 14,88 in



A center table with a unique design produced with a distinctive brown smoked glass top and a brass trim. It features an elaborated central structure made of tubes, some finished in glossy white, others with a mix of polished brass.

STANDARD FINISHES

Gold Plated Brass, Glossy Black
and Smoked Brown Glass

DIMENSIONS

Diam: 120 cm | 47,24 in
Height: 39,4 cm | 15,51 in



The mix of glass top and walnut wood legs makes for a classic look that fits any style or project. This particular design is a stunning furniture piece that is inspired by Italian lines and showcases the best of craftsmanship. This unique center table belongs to the 'La Dolce Vita' Collection, a partnership between Essential Home and the top Italian designer, Carlo Donati.

STANDARD FINISHES

Solid Wood Walnut, Brushed Brass & Glass

DIMENSIONS

Length: 97 cm | 38.2 in

Width: 50 cm | 19.7 in

Height: 36 cm | 14.2 in



Franco's structure is entirely made of wood with a beautiful oak leaf finish and some luxurious polished brass details. This dynamic center table also features two distinctive rotating tops that are customized with different materials: one was crafted in Nero Marquina marble and another that was built with a traditional straw and a clear glass finish.

STANDARD FINISHES

Varnished Walnut, Polished Brass, Straw, Marble and Glass.

DIMENSIONS

Length: 121,7 cm | 47,9 in

Width: 87,9 cm | 34,61 in

Height: 33,5 cm | 13,19 in



A perfect fit for either classic or modern living rooms. Newson is a mid-century styled low coffee table ready to set a tone in your living room look. It sets up a strong contrast between the gold plated brass structure and the brown smoked glass surface.

STANDARD FINISHES

Gold Plated Brass and Brown
Smoked Glass

DIMENSIONS

Diam: 126,50 cm | 49,80 in
Height: 32 cm | 12,60 in



164

Taylor center table is a mid-century inspired furniture piece with a touch of simple elegance that is hard to resist. Versatile and stunning, the modern furniture design reminds us of the glamour of mid-century style with a journey back in time to the roots and origins of the style.

STANDARD FINISHES

Polished Brass, Walnut Wood and tempered glass.

DIMENSIONS

Length: 80 cm | 31,50 in
Width: 80 cm | 31,50 in
Height: 45 cm | 17,72 in



Center your retro chic living room with this sober and provocative coffee table. Miller is a stunning rotating cocktail table with gold plated brass rings over the four layered nero marquina marble discs. Its rotation evokes a certain playfulness and style.

STANDARD FINISHES

Polished Brass and Polished Nero Marquina Marble

DIMENSIONS

Diam: 76,50 cm | 30,12 in
Height: 49 cm | 19,29 in



165

The structure of this magnificent center table is geometrical and entirely made out of wood and travertine stone. The soft, organic shapes of the legs support the round travertine top, highlighting the natural beauty of the high-quality materials. This piece is a combination of top design and bespoke craftsmanship.

STANDARD FINISHES

Structure: Solid Wood Walnut and
Travertine stone on the top

DIMENSIONS

Length: 100 cm | 39,37 in

Width: 60 cm | 23,62 in

Height: 30 cm | 11,81 in



The Philip Side table is a simpler reinterpretation of the center table design, but with the same unique and inspiring flair. Its structure is also based on the geometrical round shapes, but it only features a base handcrafted in solid wood that supports a perfectly round table top made with travertine stone.

STANDARD FINISHES

Structure: Solid Wood Walnut and
Travertine stone on the top

DIMENSIONS

Diameter: 60,5 cm | 23,82 in

Height: 38 cm | 14,96 in



168

FLORENCE CENTER TABLE

Florence is the perfect center table to gather everybody around. It features a custom Estremoz marble table top, which makes it gorgeous. The blue velvet upholstered body creates a rich contrast with the polished brass base, enhancing the juxtaposition of the two vibrant materials.

STANDARD FINISHES

Top:Estremoz Marble

Body: Essential Home textile

Base: Polished Brass

DIMENSIONS

Diam: 155 cm | 61,02 in

Height: 52 cm | 20,47 in



The perfect addition for your living room. Craig is a round end table that combines a stylish polished brass structure with a verde guatemala marble top. The four legs of the table provide support for a low storage space.

STANDARD FINISHES

Polished Brass and Polished

Guatemala Marble

DIMENSIONS

Length: 67,2 cm | 26,45 in

Width: 67,2 cm | 26,45 in

Height: 58,9 cm | 23,18 in



169

CRAIG SIDE TABLE

A side table of intrinsic harmony. The product of a clean design approach, this side table features two tubes of marble – Carrara and Nero Marquina, that were welded together to set a contrast that challenges the eye. It is reversible and finished with a polished brass top.

STANDARD FINISHES

Polished Brass, Polished Nero Marquina Marble and Polished Carrara Marble

DIMENSIONS

Length: 51,3 cm | 20,19 in

Width: 25,2 cm | 9,92 in

Height: 51,3 cm | 20,19 in



The perfect example of duality and contrast. Vinicius is an hourglass shaped side table finely produced in nero marquina marble and polished estremoza marble accentuated by a gold plated brass centerpiece.

STANDARD FINISHES

Gold Plated Brass, Polished Nero Marquina Marble, Polished Estremoza Marble

DIMENSIONS

Diam: 26,8 cm | 10,55 in

Height: 51 cm | 20,07 in



172

BOTTI SIDE TABLE

An elegant side table with a striking decorative feature. Botti is designed in an attractive hourglass shape and finely produced in gold plated brass, accented by a glossy black detail on the middle.

STANDARD FINISHES

Gold Plated Brass and Glossy Black

DIMENSIONS

Diam: 31 cm | 12,20 in

Height: 44,1 cm | 17,36 in



A perfect centerpiece for the engineering minds.

Wormley is a side table that features a skillful engineered structure made of pipe rings, a hallmark of excellence in metalwork that supports a clear glass on the top.

STANDARD FINISHES

Polished Brass and Clear Glass

DIMENSIONS

Diam: 60 cm | 23,62 in

Height: 52,5 cm | 20,67 in



173

WORMLEY SIDE TABLE

An elegant look full of refinement and modernity. It features a brown smoked glass top with a gold trim and a gold plated tray to give extra functionality to it. Four neat gold plated black legs are firmly kept in place by a set of brass tubes.

STANDARD FINISHES

Gold Plated Brass, Glossy Black and Smoked Brown Glass

DIMENSIONS

Length: 53,8 cm | 21,18 in
Width: 39,1 cm | 15,39 in
Height: 52 cm | 20,47 in



A cylindrical side table with a rich streamlined look and rich in varnished walnut veneer. It is layered and accented by a gold plated brass band on the center, that provides texture and detail to this sober mid-century design piece.

STANDARD FINISHES

Polished Brass, Varnished Walnut and Glossy Black

DIMENSIONS

Diam: 36,1 cm | 14,21 in
Height: 49,2 cm | 19,37 in



178

FRANCIS SCOTT SIDE TABLE

Francis Scott side tables surprises with its simplicity and elegance through a high-end minimalistic design. Its structure turns around a bespoke metal blade that embraces the beautiful marble, giving it the support it needs. If you pair it up with its sister we have a unique modular side table set that is ready to impress with its modern flair.

STANDARD FINISHES

Structure: Aged Brass and Travertine stone on the top

DIMENSIONS

Length: 41 cm | 16,14 in

Width: 35 cm | 13,78 in

Height: 50 cm | 19,69 in

**DIMENSIONS**

Length: 41 cm | 16,14 in

Width: 35 cm | 13,78 in

Height: 50 cm | 19,69 in

The perfect addition to a bistro, cafe, restaurant, hotel or indoor patio. It features a beautiful nero marquina marble top and a traditional brass band which encompasses the rim of the table. The three leg base is finished in gold plated brass and accented by a black lacquer, finish on the stem.

STANDARD FINISHES

Gold Plated Brass, Black Lacquered and Nero Marquina Marble

DIMENSIONS

Diam: 71 cm | 27,95 in

Height: 74,4 cm | 29,29 in



179

DOLLY COFFEE TABLE

With a unique color combination, Bertoia was made by the finest master artisans to feature the luxury touch that your design project needs. With a trendy black and natural wood combination, this modern bar table design is enhanced by the refined golden details, such as the golden ring in the middle of the countertop.

STANDARD FINISHES

Polished Brass and Walnut Wood.

DIMENSIONS

Length: 75 cm | 29,53 in

Width: 75 cm | 29,53 in

Height: 75 cm | 29,53 in



Turner coffee table was created in honor of the iconic design of Turner lighting lamps by DelightFULL. Celebrating the existence of the sister brand DelightFULL for the past 12 years, the Essential Home design team created an original coffee table that will be unforgettable in any space.

STANDARD FINISHES

Polished Nero Marquina Marble and polished brass

DIMENSIONS

Diameter: 65 cm | 25,59 in

Height: 60 cm | 23,62 in



A pub table inspired by mid-century modern design, crafted from verde guatemala marble and a solid polished brass leg, supported by a round marble base. Due to its timeless look it can be used as a bar table, on a living space or a vintage cocktail party.

STANDARD FINISHES

Cover: Guatemala Marble

Feet: Polished Brass

DIMENSIONS

Diam: 70,2 cm | 27,63 in

Height: 111 cm | 43,70 in



Kahn nightstand brings the strong presence of the Kahn collection into your bedroom. The wooden interior is glazed with a soft caramel tone producing a gorgeous effect as you open its drawers. A perfect furniture piece that will bring the elegance and luxury of the brand right next to you.

STANDARD FINISHES

Polished Brass, Smoked Black Glass,

Glossy Black Lacquered

DIMENSIONS

Length: 65 cm | 25,59 in

Width: 40 cm | 15,74 in

Height: 52 cm | 20,47 in





ACCESSORIES

THERE IS NO HOME WITHOUT
AN ACCESSORY THAT
MIRRORS WHO WE ARE.

186

DIAMOND SMALL MIRROR

The ultimate combination of geometry and design, inspired by the asymmetrical and dazzling shapes of a Diamond rock. The use of a polished brass structure enhances the luxurious element within this object.

STANDARD FINISHES

Polished Brass and Mirror

DIMENSIONS

Length: 96,3 cm | 37,91 in

Width: 14,7 cm | 5,79 in

Height: 110 cm | 43,31 in



A full length version of the Diamond shaped mirror which will add a luxurious and rich element to any interior. Crafted in a polished brass structure it produces a tall sleek design, merging geometry and design in the same object.

STANDARD FINISHES

Polished Brass and Mirror

DIMENSIONS

Length: 89,1 cm | 35,08 in

Width: 15,1 cm | 5,95 in

Height: 180 cm | 70,87 in



187

DIAMOND BIG MIRROR

A contemporary descendant of mid-century modern style with a set of gold plated spheres arranged in a circular pattern that creates a stunning visual effect. Quantum circular wall mirror is not just a spot-on reflection of the atomic age design, it is a leap forward.

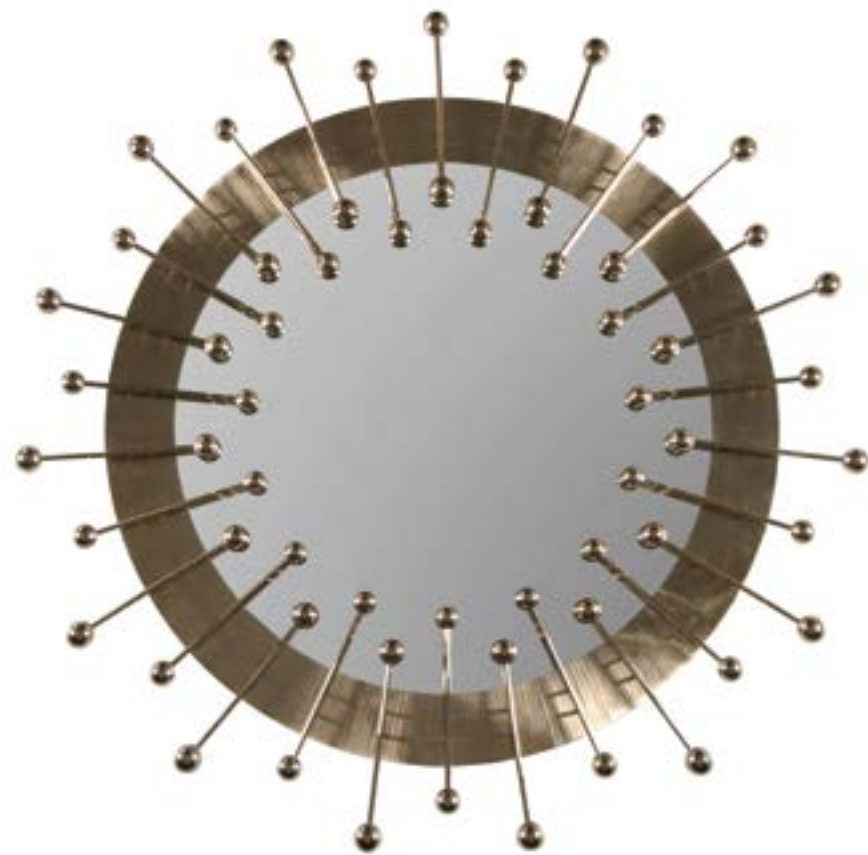
STANDARD FINISHES

Gold Plated Brass and Mirror

DIMENSIONS

Diam: 148 cm | 58,26 in

Width: 6,5 cm | 2,56 in



A striking addition to your glamorous boudoir. This retro table constructed of solid walnut wood is supported by atomic legs and features a set of 3 bullseye mirrors with a brass rim, and the smaller ones rotate.

STANDARD FINISHES

Gold Plated, Matte Black, Varnished Walnut and Mirror

DIMENSIONS

Length: 159 cm | 62,59 in

Width: 45,1 cm | 17,75 in

Height: 75,3 cm | 29,64 in



A refined 3-panel room divider, produced in solid walnut wood, a polished brass frame and brass holes that let you glimpse into the other side. The mix between the materials give a warm and natural look to your office, living room or bedroom décor.

STANDARD FINISHES

Gold Plated Brass and Varnished Walnut

DIMENSIONS

Length: 192 cm | 75,59 in

Width: 16 cm | 6,30 in

Height: 189 cm | 74,41 in



A sleek mid-century modern design piece. Built around a gold plated brass structure, it holds glossy black poplar doors and drawers. Accentuated by contemporary stylish brass handles and smoked glass shelves.

STANDARD FINISHES

Gold Plated Brass, Brown Smoked Glass and Glossy Black Poplar

DIMENSIONS

Length: 234,5 cm | 92,32 in

Width: 61,5 cm | 24,21 in

Height: 219 cm | 86,22 in



192

LASDUN DESK

A writing desk that features two cubic towers crafted from varnished walnut veneer with two doors made out of nero marquina marble. Brass details were added producing a soulful and sleek visual to the desk.

STANDARD FINISHES

Gold Plated Brass, Polished Nero Marquina
Marble and Varnished Walnut

DIMENSIONS

Length: 159 cm | 62,6 in
Width: 54 cm | 21,25 in
Height: 74 cm | 29,13 in



Sipping on a cocktail next to your bar cart never looked so good with Baughman, a mid-century bar cart with a stunning design you won't resist. With a structure in polished brass and walnut wood, with a glass top and practical wheels, this bar cart is the centerpiece of any home bar.

STANDARD FINISHES

Polished Brass, Walnut and Mirror

DIMENSIONS

Length: 62,5 cm | 24,6 in
Width: 48,5 cm | 19,09 in
Height: 85 cm | 33,46 in



193

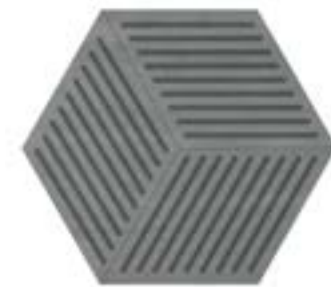
BAUGHMAN BAR CART



RUGS

AN INTERIOR IS ONLY COMPLETE
ONCE THE RIGHT RUG IS ADDED
TO BRING IN THE WOW FACTOR.

195



BURTON RUG



POLANSKY RUG



TARANTINO RUG



AUDREY RUG



COPPOLA RUG



KUBRICK RUG



SPIELBERG RUG



HITCHCOCK RUG



ALLEN RUG



ANDERSON RUG

COMPLETE YOUR MID-CENTURY PROJECT

WITH OUR LIGHTING SISTER BRAND,

DelightFULL
Unique Lamps



SINATRA FLOOR



IKE SUSPENSION



GALLIANO ROUND



BOTTI SUSPENSION



AMY FLOOR



COLTRANE FLOOR



DUKE FLOOR



IKE FLOOR



ABBAY FLOOR



ABBAY SUSPENSION



DIANA TABLE



MILES TABLE



ATOMIC CEILING



BRUBECK ROUND



MARCUS SUSPENSION



AMY TABLE



TURNER TABLE



COLTRANE SUSPENSION



MATHENY WALL



DUKE PENDANT



PASTORIUS WALL



PIAZZOLA WALL



BRUBECK WALL



COLTRANE WALL



GALLIANO WALL



DIANA FLOOR



GALLIANO PENDANT



IKE PENDANT



MATHENY ROUND



TURNER PENDANT



PROJECTS

DESIGN IS THE SOLUTION,
OUR PROJECTS ARE THE
INSPIRATION











